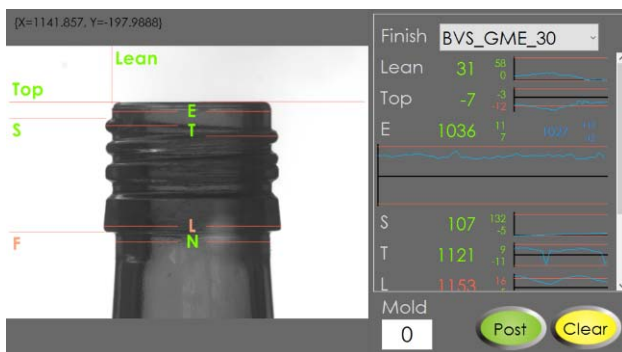


WFG Finish Gauge Datasheet

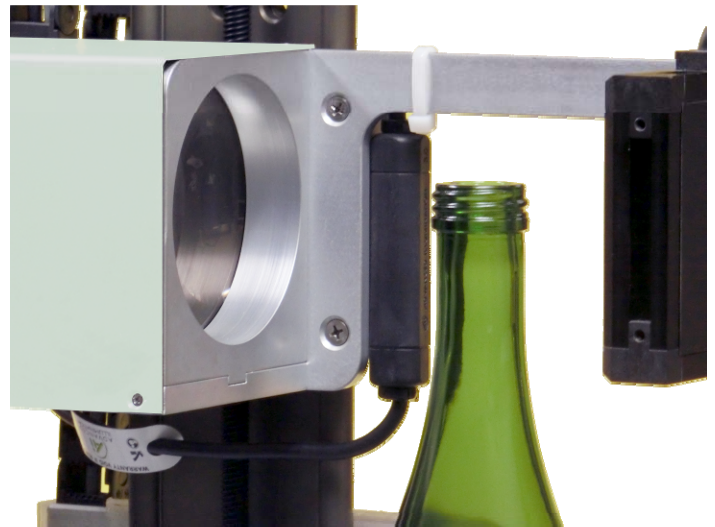
The WFG Finish Gauge is a simple to use device to quickly measure finish and container dimensions to standard specifications. Designed to withstand the tough environments, the unit can be used in the laboratory or on the production floor as a tool to efficiently and accurately log typical cold-end tests directly to your data management system.

The intuitive user-interface and semi-automatic operation, maintains the hands-on human interaction when inspecting. With consistent accuracy and repeatability, the system will enhance your inspectors' efficiency and ability to monitor the quality to your customer.

- Fast and simple to operate
- High accuracy and repeatability
- Maintains hands-on inspection of container quality
- Full visual feedback of finish specifications and quality
- Measures full range of
 - Lean
 - Off-Level
 - T, E, S-min, H, D, D-angle, A/L, N, etc.
 - Knock-out
- No setup required
- Robust enough for shop floor use
- Automatic data export
- Pre-configured with all commonly used finish specifications (custom finish service available)



(above) WFG user-interface.
(top-right) WFG Inspection Bridge

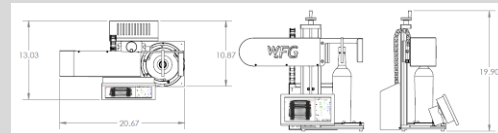


The WFG does not require any setup, supplied preprogrammed with all commonly used finishes from 28-42mm. Custom finishes can be supplied through our programming services and updated using a remote connection or email/memory-stick user-interface.

All measurements are automatically posted to your data management system to provide valuable information on production trends. The data packet includes mold number, and the full 360degree measured range of all data points.

WFG SPECIFICATIONS

Repeatability:	+/- 0.002in +/-0.05mm
Inspection Cycle:	15sec typical
Power:	100-240V 50/60Hz
Container Size:	Height: 15¼in (390mm) Diameter*: 4¾in (120mm) (*oversize and non-round requires container puck)
Dimensions:	Width: 20in Depth: 11in Height: 20in



For further information contact:

GEN-IN LLC
<http://www.gen-in.com>
+1 727 216 9670
sales@gen-in.com

